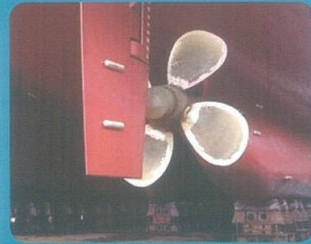


# CATHODIC PROTECTION SYSTEM

Product in the best condition



TAEHEUNG CORROSION ENGINEERING CO., LTD.





**TAEHEUNG**  
<http://www.thce.co.kr>

## CATHODIC PROTECTION SYSTEM

TAEHEUNG CORROSION ENGINEERING Co., LTD.

### IMPRESSED CURRENT SYSTEM

»» **MATERIAL..**

Rectifier, H.S.C.I Anode, Pt-Ti Anode, MMO Tubular Anode, MMO Ribbon Anode, Pb-Ag Anode, Ref. Electrode



H.S.C.I Anode



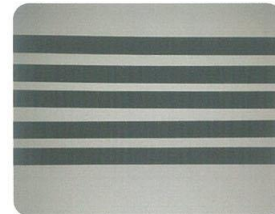
MMO Tubular Anode



Pt-Ti Anode



Rectifier



MMO Ribbon Anode



Zinc Ref. Electrode

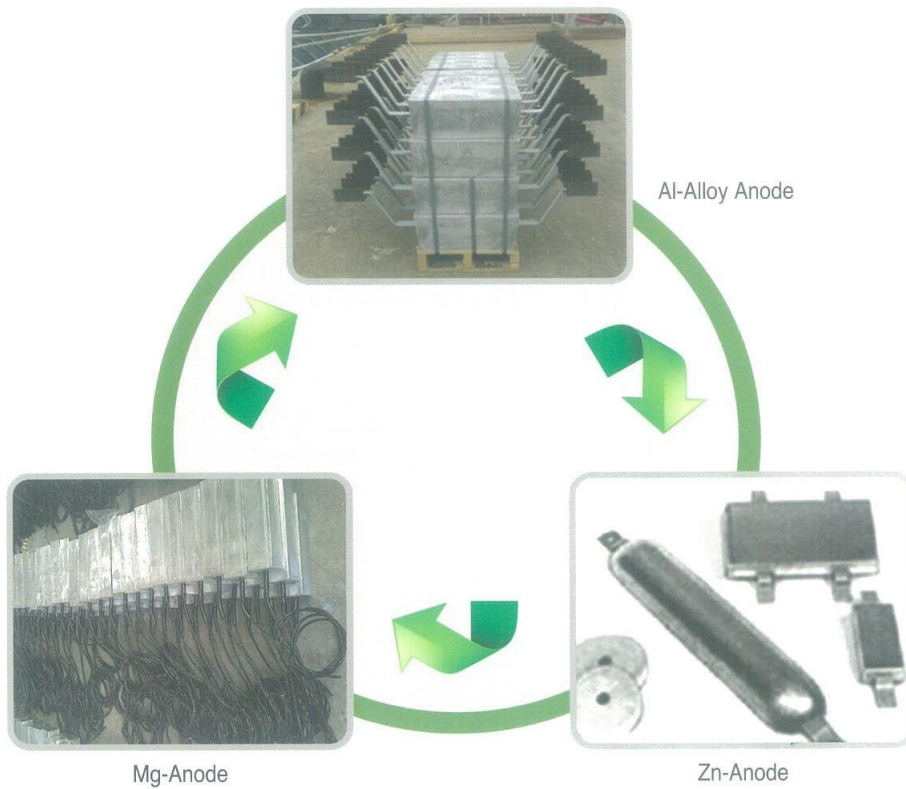


Test Box

### SACRIFICIAL SYSTEM

>>> **MATERIAL..**

Al-Alloy Anode, Mg-Anode, Zn-Anode



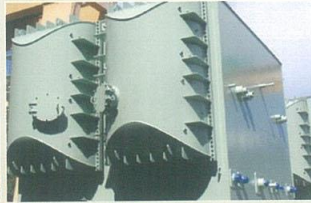


# »» POWER PLANT



Nuclear power plant  
Thermal power plant

Combined cycle power plant  
Combined heat & power plant



## Application of Cathodic Protection System

Pt-Ti Anode



Al-Alloy Anode for CWP Pipeline

H.S.C.I Anode

Zinc Ref. Electrode





Under ground pipelines  
Onshore pipelines



*Integrated Waterworks  
Oil - LNG - Gas Pipelines*

[www.thce.co.kr](http://www.thce.co.kr)



Application of Cathodic Protection System



■ MMO Tubular Anode for U/G Pipeline



■ Mg-Line Anode for LNG Pipeline



■ Mg-Anode for U/G Pipeline



# STORAGE TANK

- Crude oil storage tank
- Fuel storage tank
- Water storage tank
- Chemical & Grain SILO



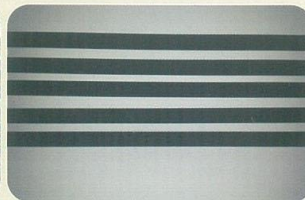
## Application of Cathodic Protection System



■ H.S.C.I Anode for Tank Bottom



■ Zinc Ref.Electrode & Cu/CuSo<sub>4</sub> Ref.Electrode for Tank Bottom



■ MMO-Ribbon Anode for Tank Bottom



■ Rectifier[Standard type]

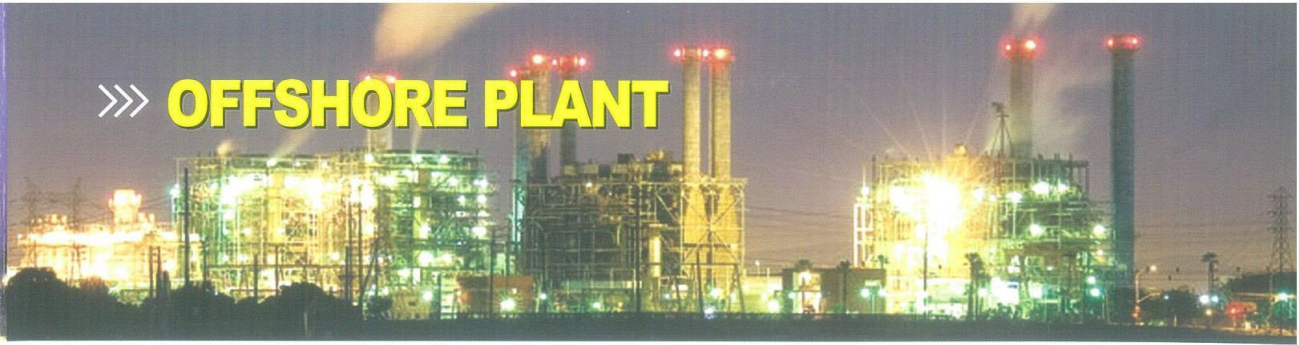


■ Test Box & Junction Box for Tank Bottom





# »» OFFSHORE PLANT



## Port Facilities



Steel piles for piers and bridges & buoys

## Power Plant



Steel structures for pumping in and out seawater

## Marine Structures



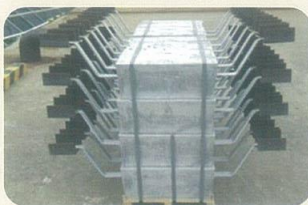
Platform jackets and oil drilling vessel, FPSO, FSU

## Bridges



Pipe piles based on the Lower bridge

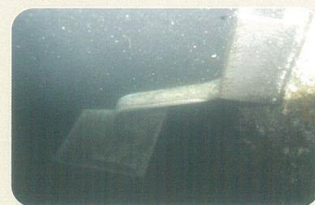
## Application of Cathodic Protection System



■ Al-Alloy Anode



■ Al-Alloy Anode for Ships



■ Al-Alloy Anode for Steel pile



■ Zn-Anode



■ Al-Alloy Anode for Steel pile





**TAEHEUNG** conforms to the following codes & standards

• NACE • DNV • API • NORSOK • NASI/IEEE • BSI

**We have the ISO certificates**

- ISO 9001: 2008 CERTIFICATE
- ISO 14001 : 2004 CERTIFICATE



## **TAEHEUNG CORROSION ENGINEERING CO., LTD.**

### **CONTACT POINT**

D. H. KIM : [thce25@hanmail.net](mailto:thce25@hanmail.net) / [skykim794@gmail.com](mailto:skykim794@gmail.com)

C. M. CHO : [thce25@hanmail.net](mailto:thce25@hanmail.net) / [chochongmun@gmail.com](mailto:chochongmun@gmail.com)

### **HEAD OFFICE**

573-4, Yaeum-Dong, Nam-Gu, Ulsan, Korea

Tel : +82-52-258-2135~6

Fax : +82-52-258-2132

E-mail : [thce25@hanmail.net](mailto:thce25@hanmail.net)

Home Page : [www.thce.co.kr](http://www.thce.co.kr)

### **FACTORY**

693-1, Gacheon-Ri, Samnam-Myeon, Ulsan, Korea

Tel / Fax : +82-52-258-3049